



UNIQUE OUTDOOR LIGHTING & HEATING

---

**GLOW** by HEATSAIL









# GLOW TIMELESS LIGHTING AND HEATING FOR YOUR TERRACE

---

5

GLOW consists of sets of 3 or 5 pieces.

Suspend each piece separately, or opt for one of the optional ceiling modules to suspend them in a circle or in a line.

You can also opt for a control box with which you can dim the lights using a remote control and switch the heating on.



**GLOW** by HEATSAIL

# HEATSAIL

---

Heatsail is a Belgian design company established in 2012 that has redefined the luxury lighting and heating space. We develop unique technical outdoor products to create longlasting experiences by extending the finest moments of a beautiful day.





**GLOW** by HEATSAIL



# LIGHT

---

The light can be used with or without the heating. You can simply dim the light with the optional remote control.



GLow by HEATSAIL



# HEAT

---

When it gets chilly just turn on the integrated heating. Discrete far-infrared heating elements give you the most pleasant warmth. Control your surrounding temperature with our 2 heat settings, low and high for all those cosy spring or autumn days and nights.

HEATSAIL





**GLOW** by HEATSAIL



13

HEATSAIL

# Technical information

---

## **Rust free & weatherproof**

The GLOW collection is made of high quality materials such as aluminium and stainless steel, making it suitable for outdoor use.



## **Low energy usage, zero CO2 emission**

The GLOW collection uses less energy than the traditional gas heaters. Because the GLOW collection is 100% electric, it doesn't emit CO2 and has a low energy consumption.



## **Low maintenance**

By using highly efficient and durable ceramic heating elements, combined with the best materials, the GLOW collection is virtually maintenance free.



## **Glow**

Comfortable warmth without a red glow.



For detailed technical information, visit

<https://heatsail.com/usa/technical-specifications-documentation/>



### Dimensions

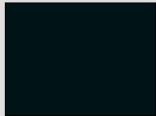
Diameter	17 cm 6.7"
Height	17 cm 6.7"
Cable length	150 cm 59"
Stem length	120cm 47,24"

### Technical specifications

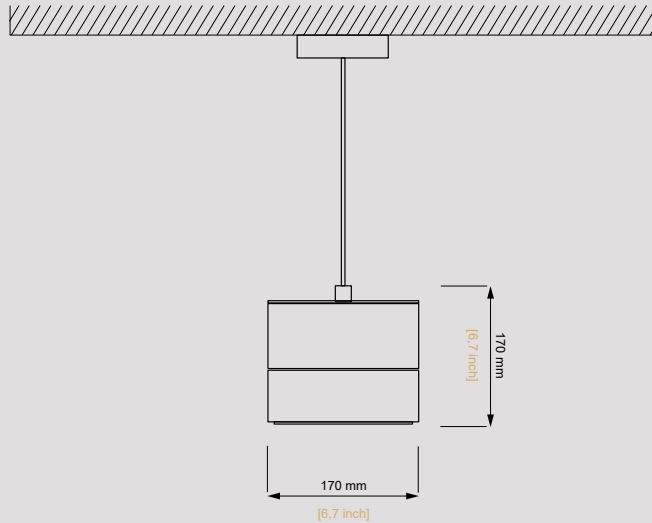
Consumption set of 3	1.92 kWh
Consumption set of 5	3.20 kWh
Heat	per module 600W, total 1600 or 3000 Watt
Light	per module max. 40W (halogen) or max. 6W (LED)

### Color

The GLOW collection is available in Midnight.



Midnight



# Product list

---



## **GLOW - Set of 3**

Supplied with 59" (1.50m) cables and 3 suspension brackets and ceiling boxes as standard.



## **GLOW - Set of 5**

Supplied with 59" (1.50m) cables and 5 suspension brackets and ceiling boxes as standard.



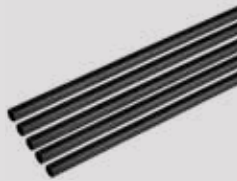
## **ROUND CEILING ROSE**

For a set of 5 (GLOW not included).



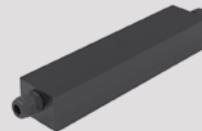
## **STRAIGHT CEILING ROSE**

For a set of 3 or 5 pieces  
Length 47" (1.2m) (3 pieces)  
Length 87" (2.2m) (5 pieces)  
(GLOW not included).



## **STEMS - Set of 3 or 5**

Set of 3 or 5 suspension stems of 47" (1.20m) long and 10mm thick for windy environments.



## **CONTROLS**

Control box with remote control. Dims the lighting, switches the heating in 2 positions.



---

HEATSAIL








**GLOW** by HEATSAIL

# CONTACT

---

## Headquarters

Heatsail NV  
Prins Boudewijnlaan 7, A08  
2250 Kontich (Antwerp)  
Belgium  
  
+32 (0)3 502 99 88  
sales@heatsail.com

-  HEATSAIL.COM
-  HEATSAIL
-  HEATSAILBELGIUM
-  HEATSAIL
-  HEATSAIL

## Heatsail USA Inc.

10440 N Central Expressway, Suite 800  
75231 Dallas, Texas  
United States of America

+1 214 808 5091  
UCM@heatsail.com



**GLOW** by HEATSAIL